

blacklinesafety

G7 DOCK

Technical User Manual

CONTENTS

OVERVIEW

Connected gas calibration and bump testing	4
Blackline Safety Network	5
Blackline Live web portal	5
What's in the box	6
Hardware details	7
Gas inlet configuration	8

OPERATING

Requirements.....	10
How it works.....	10

FEATURES

Charging G7.....	12
Bump test.....	12
Calibration	13
G7 Dock update.....	13
Multi Dock Set-up.....	14

MOUNTING

Wall-mounting	15
---------------------	----

G7 DOCK CARE

Maintenance.....	15
------------------	----

TROUBLESHOOTING

Setup.....	16
Calibration and bump tests	17

SPECIFICATIONS

Detailed specifications.....	18
------------------------------	----

SAFETY PRECAUTIONS

Danger	19
Warning.....	19
Legal notices	19

SUPPORT

Learn more	20
Customer Care.....	20

OVERVIEW



CONNECTED GAS CALIBRATION AND BUMP TESTING

What is G7 Dock?

G7 Dock is Blackline's solution to gas sensor calibrating, bump testing and charging G7. It supports both G7c and G7x devices with single-gas or quad-gas cartridges.

Simply insert G7, and G7 Dock will do the rest. It automatically charges G7 and places it into a test-ready mode to eliminate false alerts.

G7 Dock helps you keep fully compliant according to your business calibration and bump testing policies, so that it always has your back.

BLACKLINE SAFETY NETWORK

How am I connected?

G7 Dock is not inherently connected to the Blackline Safety Network. It communicates to the network through a connected G7 device placed inside of it.

The Blackline Safety Network is the cloud-hosted system used to monitor your safety. It includes 2G and 3G cellular networks, satellite networks, our Blackline Live™ portal application, your monitoring account and your personal safety monitoring device.

Each device requires an active service plan in order to connect to the Blackline Safety Network.

BLACKLINE LIVE WEB PORTAL

What is Blackline Live?

G7 Dock uses the cloud-hosted Blackline Live portal to monitor employee safety and manage your devices.

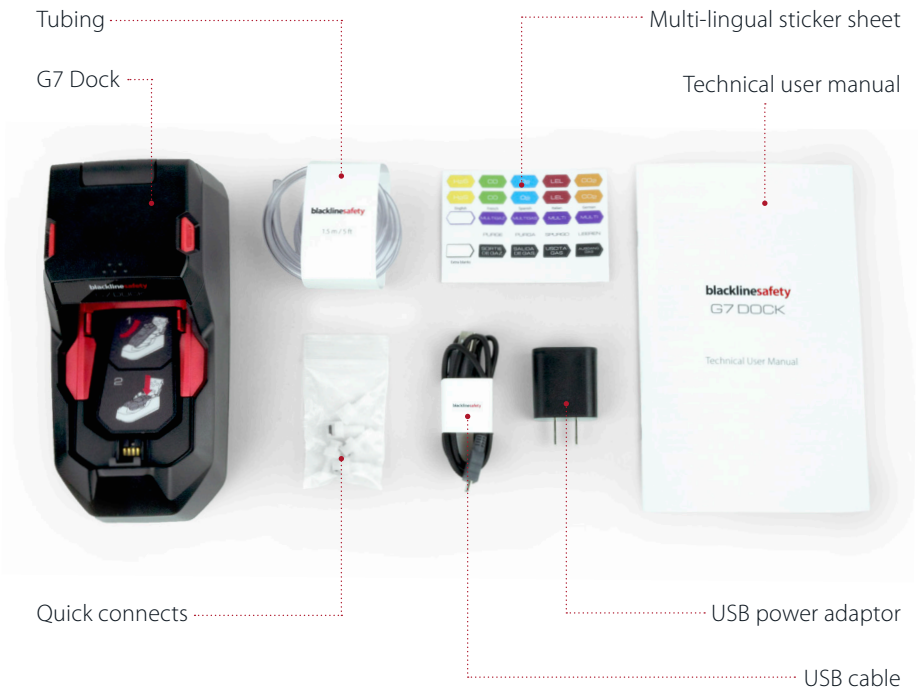
Blackline Live keeps track of alert history, gas calibrations and bump tests, and eliminates the need to manually retrieve data logs from the field. All G7 data is communicated in real-time.

Blackline Live tailors user access depending on employee roles: employee, supervisor, administrator and monitoring team. This ensures that everyone has access to the right tools to accommodate their role in a comprehensive monitoring program.

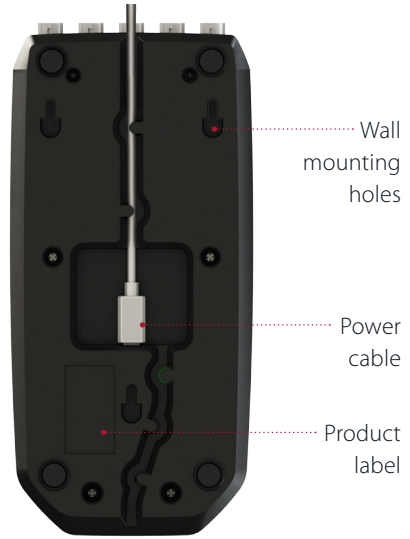
WHAT'S IN THE BOX

Your G7 Dock comes with the following components:

- G7 Dock
- Tubing
- Quick-connects (four male, one female)
- Power components
 - USB cable
 - USB power adapter
- Multi-lingual sticker sheet
- Technical user manual

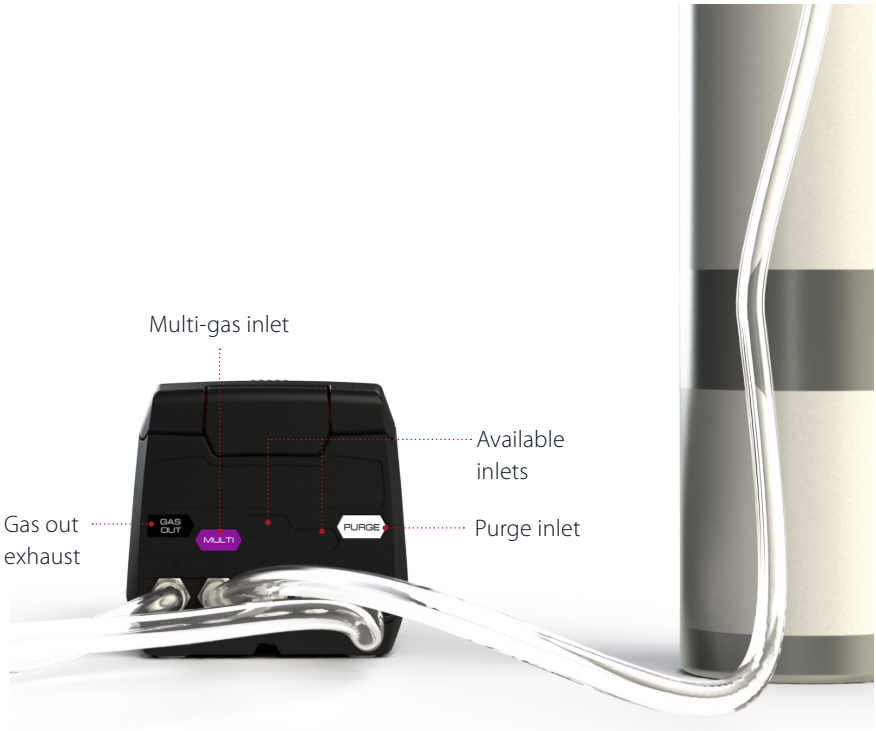


HARDWARE DETAILS



GAS INLET CONFIGURATION

The back of G7 Dock is equipped with a Gas Out exhaust and four gas inlets with quick-connects. The inlets are pre-programmed for you.



How are my inlets configured?

When looking at the back of G7 Dock, the Gas Out exhaust is the connector on the far left side of the dock. It is used to transfer calibration gas to a safe exhaust location.

NOTE: You should never plug gas into the Gas Out exhaust.

The first inlet is configured to support a multi-gas calibration mixture with a composition of:

COMPONENTS	CONCENTRATION
HYDROGEN SULFIDE	25 PPM
CARBON MONOXIDE	100 PPM
METHANE	50% LEL
OXYGEN	18%
NITROGEN	Balance

Inlet four is configured as a purge inlet, supplying clean air to remove residual gas from G7 Dock.

By default, inlet two and three have not been set up.

All four inlets are customizable and a multi-lingual sticker sheet is provided to label customized inlets. To make changes to your inlets, please contact our Customer Care team who can assist you with over-the-air configuration updates.

How do I connect a gas cylinder to G7 Dock?

G7 Dock provides quick-connects that attach to one end of tubing. Join the tubing to the configured inlet at the back of G7 Dock by connecting both quick-connect ends and twisting clockwise until clicked securely in place. Ensure the other end of the tubing is attached to a demand flow regulator on the gas cylinder.



OPERATING

REQUIREMENTS

What do I need for G7 Dock to operate?

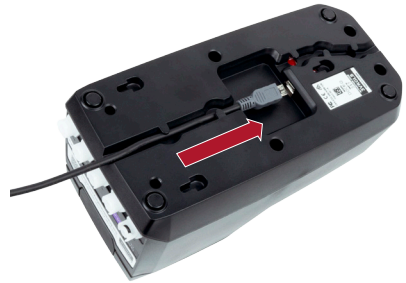
- G7c or G7x personal safety monitoring device (single or quad cartridge)
- Gas cylinder with specific multi-gas mixture
- 120/240 VAC Power source and power components

NOTE: Blackline requires using the power components provided with your G7 Dock.

HOW IT WORKS

How do I power G7 Dock?

Insert the power cable into the port on the bottom of G7 Dock. Feed the power cable through the tracks along the bottom to allow the dock to lie flat on a table surface or mount on a wall.



When plugged in, the green light at the charge clip will turn on to indicate power.

How do I open G7 Dock?

Press inward on the two red release tabs until dock's lid clicks open.



How do I place my G7 device into G7 Dock?



1. Slide G7 device into G7 Dock's charge clip at an angle - ensure the charge clips of both devices are connected.



2. Keeping the charge clips connected, lie G7 down into dock and push down until it clicks in place.



3. Close G7 Dock's lid and press down until the release tabs click into place on both sides.

FEATURES

CHARGING G7

How does G7 Dock charge my G7 personal safety monitor?

G7 devices will automatically start charging when placed into a powered G7 Dock. It will take a maximum of four hours to fully charge G7.

NOTE: If G7 is not charging, confirm G7 Dock is powered, the charge clip is clean of debris and G7 device is properly placed on the dock charge clip.

BUMP TEST

What is a bump test?

Bump tests are a safe practice to regularly test alarm indicators (lights, sound and vibration) on G7 by applying enough gas to the sensors to trigger an alarm.

G7 communicates bump test data automatically to the Blackline Safety Network, and will remind you when a bump test is overdue. The bump test schedule is configurable.

NOTE: To meet CSA LEL performance standard, you are required to bump test before each day's use. Blackline recommends you do not exceed 30 days without a bump test.

Overdue bump test

If G7 device is overdue for a bump test according to its configuration, it will automatically begin a bump test when placed into G7 Dock.

How do I perform a bump test that is not overdue?

1. Power on G7 device
2. Place G7 into G7 Dock
3. Close the lid until it clicks in place
4. Press the G7 arrow buttons to navigate to Bump Test in the menu that appears on the G7 LCD screen
5. Press the G7 OK button to select Bump Test
6. G7 Dock will perform the bump test
7. G7 will let you know if the bump test has passed or failed and when it is ready to be removed from G7 Dock

CALIBRATION

What is calibration?

Gas sensors periodically need to be calibrated by applying a known concentration of gas for a set amount of time. This procedure ensures the gas sensor can accurately detect gas levels throughout its operating life. The calibration schedule depends on your company's safety policy. Blackline recommends not exceeding 180 days without a calibration.

Calibration Settings

G7 devices have their own gas calibration settings, which can be modified in Blackline Live. If the device settings do not match G7 Dock's settings, the calibration will continue using dock's settings as a default. As long as G7 Dock is configured correctly to the gas concentrations being used, the calibration will be successful.

Overdue calibration

If G7 device is overdue for a gas calibration, it will automatically begin calibrating when placed into G7 Dock.

How do I perform a calibration that is not overdue?

1. Power on G7 device
2. Place G7 into G7 Dock
3. Close lid until it clicks in place
4. Press the G7 arrow buttons to navigate to Calibration in the menu that appears on the G7 LCD screen
5. Press the G7 OK button to select Calibration
6. G7 dock will perform the calibration
7. G7 will let you know if the calibration has passed or failed and when it is ready to be removed from G7 Dock

G7 DOCK UPDATE

To make changes to your G7 Dock configuration, please contact our Customer Care team who can assist you with over-the-air configuration updates.

NOTE: Dock G7 does not need to be connected to the Blackline Safety Network to charge or complete calibrations and bump tests, but does need to be connected to the network to update configuration settings.

MULTI DOCK SET-UP

What is a multi dock set-up?

In situations where multiple safety monitoring devices require calibration and bump testing, device docks can be joined together to perform these functions across all connected devices. Multiple G7 Docks can be connected to a single gas cylinder by using multiple tubes, check valves and T-connectors. One gas cylinder is able to support five G7 Docks at one time.

What do I need for a multi dock set-up?

- G7c or G7x personal safety monitoring devices (single or quad cartridge)
- G7 Docks for each device
- Tubing
- Nylon or polyethylene T-connectors
- Nylon check valves
- Gas cylinder with specific multi-gas mixture
- 120/240 VAC Power source for each dock

How do I calibrate and bump test multiple devices?

G7 Docks in a multi dock set-up act independently of each other - calibrations and bump tests are carried out in the same manner that they would be if they were set up separately. This means that docks connected to the same gas cylinder can do calibrations and bump tests at the same time without interfering with each other.

MOUNTING

G7 dock can be placed flat on a table or mounted to a wall.

WALL-MOUNTING

How do I mount my G7 Dock on a wall?

When mounting G7 Dock to a wall, ensure the location is within reach of a power source and gas cylinder.

To mount G7 Dock, remove the mounting guide located on page 21. Place mounting guide on wall to plan where to place the mounting screws. Attach screws to wall where indicated by 'x'.

Align G7 Dock wall-mounting holes (located on the back of the dock) with the screws and slide downward to lock in place.

G7 DOCK CARE

MAINTENANCE

How do I care for my G7 Dock?

To make sure G7 Dock is in working condition, ensure the following:

- Gas valves inside the G7 Dock lid move freely and are free of debris
- Gas inlets and outlet are free of debris
- Charge clip is free of debris

To clean G7 Dock, wipe down with a damp cloth. Do not pressure spray.

TROUBLESHOOTING

SETUP

Why is G7 telling me to close my lid when I have already closed it?

If your device is telling you to close the lid when you try to run a bump test or calibration, it is likely that the lid has not been closed properly. Ensure that you press down on both sides of the lid so that both release tabs click into place.

Why is my device unresponsive when I put it into G7 Dock?

If your device does not respond when placed into G7 Dock, it may not be properly connected to the dock, or the dock may not be connected to a power supply. Remove your device from G7 Dock and check to see if the green power light is on.

If...	Dock's green light is on:	Dock's green light is off:
	<p>Your device may not be properly connected to G7 Dock. Ensure that:</p> <ul style="list-style-type: none">▪ Charge clips on both the device and dock are connected▪ Device clicks into place when set down into the dock▪ Lid is properly closed. Ensure that you press down on both sides so that both release tabs click into place.	<p>G7 Dock is likely not connected to a power supply. Ensure that:</p> <ul style="list-style-type: none">▪ Power cable is properly plugged into the dock and the power source▪ Charge clips are free of debris▪ Power source being used is 120/240 VAC

CALIBRATION AND BUMP TESTS

Why are my calibrations and bump tests failing?

Calibrations and bump tests can fail if there is not enough gas reaching the sensors. To ensure that gas is flowing from the gas cylinder to G7 Dock, check that:

- There are no kinks or crimps in the tubing
- The gauge on the gas cylinder indicates there is gas inside
- The gas cylinder is using a demand-flow regulator
- The quick-connects are properly connected to G7 Dock
- Gas concentrations in the gas cylinder match device and dock configurations - configurations can be changed over-air with Customer Care

If G7 Dock is still not operating correctly, please contact Customer Care.

SPECIFICATIONS

DETAILED SPECIFICATIONS

Size & Weight

Size: 215mm x 100mm x 95mm (8.46" x 3.94" x 3.74")

Weight: 202g (7.1 oz)

Gas configuration

4 customizable gas inlets, 1 gas outlet

Bump test

25 second bump test, less than 10 seconds of gas applied during a bump

Calibration

4 minute calibration, less than 2 minutes of gas applied during a calibration

Gas Usage

Optimized gas delivery

Power Supply

Blackline requires using the power supply provided with your G7 Dock.

Input voltage: 5 VDC @ 1000 mA

Power connector: Micro-USB

120/240 VAC power adaptor and USB cable included.

Regulatory Compliance

RCM

CAN ICES-3(B)/NMB-3(B)

FCC

CE

Features

- Over-the-air configuration updates
- Automatic Bump
- Automatic Calibration
- Dock usage reports
- Gas usage reports

Warranty

Two year warranty

SAFETY PRECAUTIONS

DANGER

Do not use G7 Dock in areas classified as hazardous locations, where there is risk of explosion due to presence of gas, vapor, or dust. G7 Dock is not certified as intrinsically safe.

Do not place G7 Dock in or near open flame.

WARNING

Electrical equipment may be hazardous if misused.

Seek advice from your local electronics recycling authority regarding the disposal of your device. Do not dispose Blackline products in your household trash.

LEGAL NOTICES

Information in this document is subject to change without notice. This document is provided "as is" and Blackline Safety Corp. ("Blackline") and its affiliated companies and partners assume no responsibility for any typographical, technical or other inaccuracies in this document. Blackline reserves the right to periodically change information that is contained in this document. However, Blackline makes no commitment to provide any such changes, updates, enhancements or other additions to this document to you in a timely manner or at all.

Copyright © 2017 Blackline Safety Corp. All rights reserved.

Except as expressly provided herein, no part of this manual may be reproduced, copied, transmitted, disseminated, downloaded, or stored in any storage medium, for any purpose without the express prior written consent of Blackline Safety Corp. ("Blackline"). Blackline hereby grants permission to download a single copy of this manual onto some form of electronic storage medium to be viewed and to print one copy of this manual or any revision hereto, provided that such electronic or printed copy of this manual must contain the complete text of this copyright notice. Further, any unauthorized commercial distribution of this manual or any revision hereto is strictly prohibited.

The Blackline, Alert, Locate, Respond, families of related marks, images and symbols, including Blackline, G7, G7c, G7x, G7 Bridge, G7 Dock, LiveResponse, Loner, Loner IS, Loner IS+, Loner M6, Loner M6i, Loner Mobile, Loner 900, and SureSafe are the exclusive properties and trademarks of Blackline Safety Corp. All other brands, product names, company names, trademarks and service marks are the properties of their respective owners.

Warranty

Your G7 Dock is warranted against defects in materials and workmanship for up to two year from date of purchase. For further details regarding your Blackline warranty, please refer to your Terms and Conditions of Service. Visit <http://www.blacklinesafety.com> for more information.

SUPPORT

LEARN MORE

Visit support.BlacklineSafety.com to find support and training materials for G7 Dock.

CUSTOMER CARE

For technical support, please contact our Customer Care team.

North America (24 hours)

Toll Free: 1-877-869-7212 | support@blacklinesafety.com

United Kingdom (8am-5pm GMT)

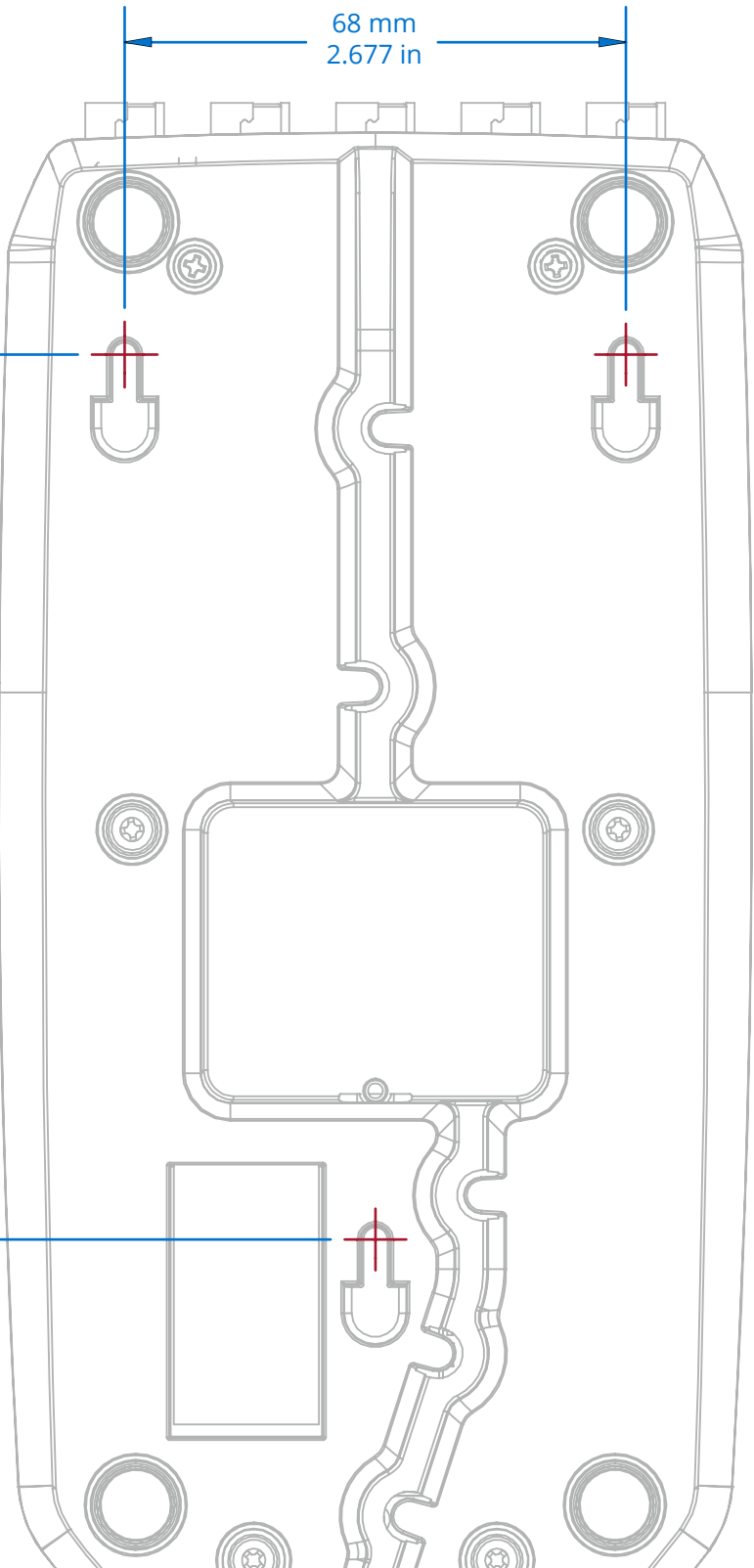
+44 1787 222684 | eusupport@blacklinesafety.com

International (24 hours)

+1-403-451-0327 | support@blacklinesafety.com

68 mm
2.677 in

120 mm
4.724 in



blacklinesafety

www.BlacklineSafety.com